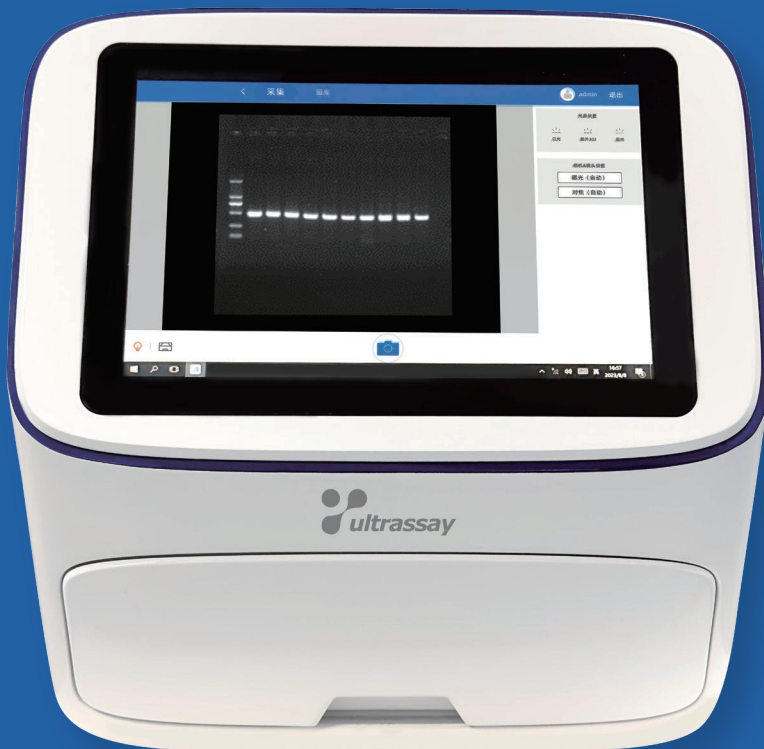




Multi-Funtion Gel Imaging & Analysis System

G520M

*Highly integrated design:
A new experience of human-computer interaction*



“Multi-Function Imaging & Analysis System”

The technological innovation in gel imaging systems has led to the development of the third-generation fully automated intelligent imaging analysis system.

Integrated LED Light Source

- Equipped LED UV light sources, which offer a lifespan of more than 10K hrs, provide more uniform light intensity, and result in a finer imaging background.
- The integrated 3-band LED light allows for seamless switching between Blue, UV and White light without the replacing or installing a new illuminator.



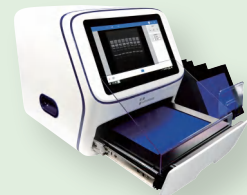
Smart sample tray with automatic light recognition

- The smart sample tray can detect and activate the light automatically. After image capture, it will turn off the light automatically, with an optional feature for scheduled automatic shutdown.



Smart gel cutting detection device

- After the instrument is removed from the chamber, the gel protection plate automatically detects and activates the light, supporting gel cutting operations in both UB and Blue light modes.



High-definition and high-sensitive optical system

- 20 Megapixel CMOS camera with automatic exposure feature.
- Equipped an automatic focusing motorized zoom lens.



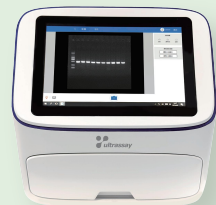
One-click capture, automatic imaging

- Automatic recognizes the light & application based on the selected sample tray;
- Allows for one-click capture and automatic shooting;
- Can be set to automatically capture images after sample is placed in chamber.



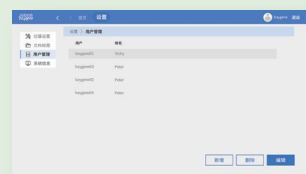
Compact and space-saving

- Built-in PC with a 12.1-inch touch screen;
- The overall dimension is 39x45x42cm, making it compact and space-efficient.



Data management and user management

- Facilitates management of experimental data reports;
- Supports user hierarchical management.



Application Scope

Nucleic Acid Detection

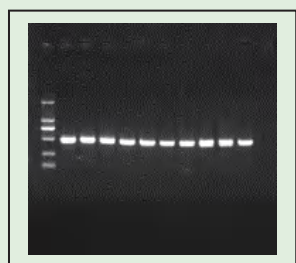
Suitable for DNA/RNA detection with various UV and Blue light nucleic acid dyes, such as EB, SYBR Gold, SYBR Green, GelRed, GelGreen etc.

Protein Detection

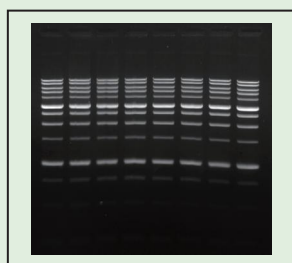
Used for imaging Coomassie Brilliant Blue gels, silver-stained gels, and others.

Nucleic Acid Gel Cutting

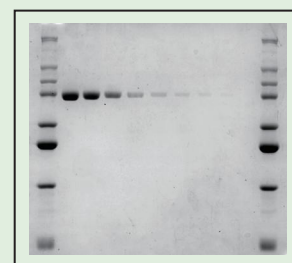
Supports cutting of gels stained with UB and Blue light-excitable dyes.



UV gel imaging



Blue light gel imaging



Protein gel imaging

Technical Specification

Name	Multi-function Imaging & Analysis System	Model	G520M
Display	12.1-inch Touch Screen	LED Light	UV/Blue light/White light
Camera	20 MP CMOS	Sample Tray	Smart recognize UV/Blue/White light
Resolution	5472x3648	Cutting Gel	Smart recognize gel cutting protection plate
Quantum Efficiency	≥84%	Auto Capture	Yes
Pixel Density	16 bit (65335 Grey scales)	UV Light	View area: 21x15cm, 302nm
Signal-to-noise ratio	≥73dB	Blue Light	View area: 21x15cm, 470nm
Lens	Automatic focusing motorized zoom	White Light	View area: 21x15cm
Auto Focusing	Yes	Software	Imaging capture and analysis software
Auto Shooting	Yes	Overall Size	39x45x42cm
Filter	590nm	Power Supply	AC 220V/50Hz