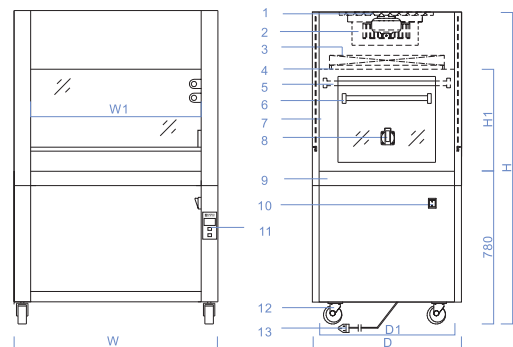


SW-CJ Series Vertical Laminar Flow Cabinet

Sliding door system, digital display, 3 level velocity adjustable, single and double side optional, UV light appointment



- | | | |
|----------------|------------------|---------------------|
| 1. Pre-filter | 6. UV Lamp | 11. Control Panel |
| 2. Fan Unit | 7. Sliding Door | 12. Universal Wheel |
| 3. HEPA Filter | 8. Spare Socket | 13. Power Line |
| 4. Diffuser | 9. SUS Table | |
| 5. Light | 10. Power Switch | |

- It adopts the Japanese imported suspension lifting system, and the anti-UV safety glass is safe and reliable.
- Digital display control interface with soft key button, air velocity can be adjusted in 3 level.
- Interlocking function of lighting and sterilization system, operator can make an appointment for UV light.
- Single or double person, single or double side operate can be optional.

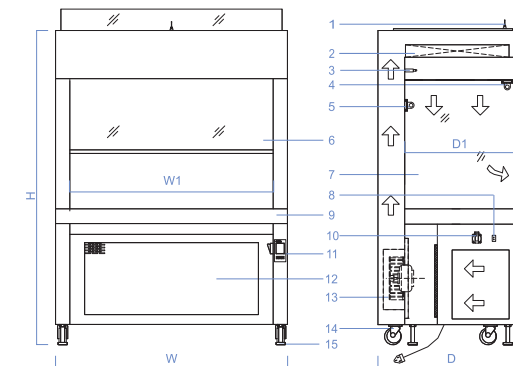
Technical Specification

Model	SW-CJ-1F-II	SW-CJ-2F-II	SW-CJ-1FD-II	SW-CJ-2FD-II
Cleanliness	ISO CLASS 5			
Air Velocity	≥0.3 m/s (adjustable)			
Noise	≤62 dB(A)			
Illumination	≥300 Lx			
Power Supply	AC220V, 1Φ, 50Hz			
Comsumption	250 W	500 W	250 W	500 W
Weight	130 kg	170 kg	130 kg	170 kg
Work Dimension (W1xD1xH1)	870x690x520mm (34.3"x27.2"x20.5")	1360x690x520mm (53.5"x27.2"x20.5")	870x690x520mm (34.3"x27.2"x20.5")	1360x690x520mm (53.5"x27.2"x20.5")
Overall Dimension (WxDxH)	1010x750x1600mm (39.8"x29.5"x63.0")	1360x750x1600mm (59.1"x29.5"x63.0")	1010x750x1600mm (39.8"x29.5"x63.0")	1360x750x1600mm (59.1"x29.5"x63.0")
Size & No. of HEPA Filter	820x600x50mm x 1 (32.3"x23.6"x2.0" x 1)	610x610x50mm x 2 (24.0"x24.0"x2.0" x 2)	820x600x50mm x 1 (32.3"x23.6"x2.0" x 1)	610x610x50mm x 2 (24.0"x24.0"x2.0" x 2)
Light	LED 7w x 1 pc	LED 7w x 2 pcs	LED 7w x 1 pc	LED 7w x 2 pcs
UV Light (optional)	18 w x 1 pc	36 w x 1 pc	18 w x 1 pc	36 w x 1 pc
No. of Colony	≤0.5cfu/dish * 0.5h			
Materials	Working table: All-in-one stainless steel, Outside cabinet: high grade steel and lacquered in ivory.			
Mode of Operation	single people/double side	double people/double side	single people/double side	double people/double side

* Not include spare socket, the capacity of each unit is 3A

VS Series Vertical Laminar Flow Cabinet

Sliding door system, Color LCD digital display, curved arc design, real-time display air velocity, UV light appointment



- | | | |
|------------------------|------------------|------------------------------|
| 1. PAO Testing Port | 6. Sliding Door | 11. Control Panel |
| 2. HEPA Filter | 7. Side Glass | 12. Pre-filter |
| 3. Air Velocity Sensor | 8. Power Switch | 13. Fan Unit |
| 4. Light | 9. SUS Table | 14. Universal Wheel |
| 5. UV Lamp | 10. Spare Socket | 15. Adjustable Leveling Foot |

- It adopts the Japanese imported suspension lifting system, and the anti-UV safety glass is safe and reliable.
- It adopts color large-screen LCD display with soft key button operation to realize performance indexes such as air velocity and provide fault alarm.
- The front-end curved arc design is ergonomically designed for comfortable operation and reduced fatigue.
- Interlocking function of lighting and sterilization system, operator can make an appointment for UV light.

Technical Specification

Model	VS-840K	VS-1300L	VS-840K-U	VS-1300L-U	VS-1800L-U
Cleanliness	ISO CLASS 5				
Air Velocity	≥0.33 m/s ± 0.03m/s				
Noise	≤62 dB(A)				
Illumination	≥300 Lx				
Power Supply	AC220V, 1Φ, 50Hz				
Comsumption	250 W	500 W	250 W	500 W	500 W
Weight	145 kg	200 kg	145 kg	200 kg	250 kg
Work Dimension (W1xD1xH1)	680x630x570mm (26.8"x24.8"x22.4")	1140x630x720mm (44.9"x24.8"x28.3")	680x630x570mm (26.8"x24.8"x22.4")	1140x630x720mm (44.9"x24.8"x28.3")	1640x630x720mm (64.6"x24.8"x28.3")
Overall Dimension (WxDxH)	840x830x1630mm (33.1"x32.7"x64.2")	1300x830x1780mm (51.2"x32.7"x70.1")	840x830x1630mm (33.1"x32.7"x64.2")	1300x830x1780mm (51.2"x32.7"x70.1")	1800x830x1780mm (70.7"x32.7"x70.1")
Size & No. of HEPA Filter	760x610x50mm x 1 (29.9"x24.0"x2.0" x 1)	610x610x50mm x 2 (24.0"x24.0"x2.0" x 2)	760x610x50mm x 1 (29.9"x24.0"x2.0" x 1)	610x610x50mm x 2 (24.0"x24.0"x2.0" x 2)	860x610x50mm x 2 (33.9"x24.0"x2.0" x 2)
Light	LED 7w x 1 pc	LED 10w x 1 pc	LED 7w x 1 pc	LED 10w x 1 pc	LED 14w x 1 pc
UV Light (optional)	/	/	18 w x 1 pc	30 w x 1 pc	36 w x 1 pc
No. of Colony	≤0.5cfu/dish * 0.5h				
Materials	Working table: All-in-one stainless steel, Outside cabinet: high grade steel and lacquered in ivory.				
Mode of Operation	single people/single side	double people/single side	single people/single side	double people/single side	double people/single side

* Not include spare socket, the capacity of each unit is 3A