

- A new method of installing and positioning the rotor, just put the rotors on the drive shaft without any tools.
- With monitoring and tracking function, by scanning the QR code of the sample, record the parameters of the centrifugal process; Self-saving running records, operation records, system logs, fault records, support pdf, xlsx (encrypted and unmodifiable) export format, date can be maintained for more than 10 years.
- Improve productivity with new generation carbon fiber rotor, which are safer and more corrosion resistant, one-half the weight of aluminum alloy rotor, with a service life of 15 years.
- Automatic rotor identification, avoid the risks with incorrect setting, and record the running times and cycles for each rotor.
- Glove-friendly 15.6-inch HD touch screen, high definition (1920x1080), intuitive display and easy to operate.
- Directly input the setting value without adjustment, more convenient compared with traditional knob operation.
- Powerful control system offering the function of 5-steps gradient separation, sample ID, startup at appointed time, curve mode, free choice of programs and multiple operation language option.
- Strong safety performance, the user management function prevent programs from unexpected modification or deletion.
- Safe and reliable centrifugation, max speed up to 30000rpm, max RCF up to 108860xg, and many rotors are available to choose from.

Available rotors



Rotor Type: Angle Rotor
Max. Capacity: 18x10ml
Max. Speed: 26000rpm
Max. RCF: 77260xg
Order No.: UltraSpin-1810
Adapter: 1.5ml, 5ml, 7ml



Rotor Type: Angle Rotor
Max. Capacity: 48x1.5ml
Max. Speed: 23000rpm
Max. RCF: 57134xg
Order No.: UltraSpin-4815
Adapter: 0.2ml, 0.5ml



Ultrassay BioTech Co., Ltd.

RM3018 Poly D9, No. 999 Luzhou Avenue, Baohe District, Hefei, Anhui, China
Tel: +86-551-62881663
E-mail: info@ultrassay.com
Website: <https://ultrassay.com>

UltraSpin-30KR

Floor Standing High Speed Refrigerated Centrifuge

UltraSpin-30KR high speed refrigerated centrifuge is an intelligent and high-efficiency centrifuge developed by Ultrassay which reaches the international advanced technology level. 16 rotor options, which can separate, concentrate and purify cytoplasm, viruses, bacteria, proteins and nano-materials, etc. It is widely used in hightech fields such as stem cells, exosomes, molecular biology, biopharmaceuticals and special materials.



Features

- Adopts ultracentrifugal sealing technology, high vacuum degree.
- New generation dynamic intelligent control system, user operate the centrifuge according to conventional centrifuge use method without additional operation.
- Excellent energy consumption performance. Save up to 70% energy consumption compared with traditional centrifuge.
- Adopts aerospace technology for non-contact detection of rotor imbalance, and uses new algorithms to analyze the subtle changes in rotor imbalance during operation, quickly detecting the rotor imbalance state and preventing serious rotor imbalance accidents.
- Adopts AC variable frequency motor, speed accuracy ± 10 rpm. Unique motor bearing heat dissipation patent makes the motor bearing always work in the best state and greatly improves the service life of the motor.
- The flexible driving device of centrifuge with protection, which makes the rotor spinning extremely smoothly, meanwhile, continuously detect the unbalance state of the rotor in operation. Which greatly improve safety in centrifugation process. This technology has obtained national patent.
- Door lock with labor-saving operation and good safety.
- The self-developed high-speed centrifuge bottle can not only bear high centrifugal force, but also disinfect at high temperature without deformation (121°C, 15min).

Technical specification

Model	UltraSpin-30KR			
Max. Speed	Angle Rotor	30000rpm	Swing Rotor	13000rpm
Max. RCF	Angle Rotor	110000xg	Swing Rotor	27680xg
Max. Capacity	Angle Rotor	4x1000ml	Swing Rotor	4x250ml
Time Setting Range	1min~99h59min, 1s~99min59s, 2s~99h59min59s			
Timing Mode	Timing after spinning, Timing after reach setting speed, Continuous timing			
Temperature Setting Range	-20°C ~ 40°C, Step 1°C adjustable			
Temperature Accuracy	0 ~ 15°C @ ±2°C, >15°C @ ±3°C			
Speed Accuracy	±20rpm			
Power Supply	AC220 ± 22V 50Hz			
Power Consumption	2.5kW			
Noise	≦65dB			
Rotor Identification	Yes			
Imbalance Protection	Yes			
Pre-cooling Function	Yes			
Computer Control	Yes			
Protection Function	Imbalance protection, rotor-identification, door lid anti pinch protection, motor overheating protection, over-speed protection, over-temperature protection, speed sensor protection, oil pump blocking protection, etc.			
Dimension (WxDxH)	920x700x1180 mm			
Packing Size (WxDxH)	1300x1000x1480 mm			
Net Weight	440kg			

*Ultrassay BioTech Co., Ltd. reserves the right of final interpretation of different application.

Available rotors



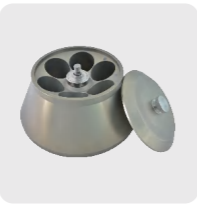
Rotor Type: Angle Rotor (Titanium Alloy)
Max. Capacity: 8x50ml
Max. Speed: 30000rpm
Max. RCF: 110000xg
Order No.: UltraSpin-0850A
Adapter: 1.5ml, 5ml, 10ml, 20ml, 25ml, 50ml



Rotor Type: Angle Rotor
Max. Capacity: 8x50ml (conical)
Max. Speed: 20000rpm
Max. RCF: 46200xg
Order No.: UltraSpin-0850B
Adapter: 1.5ml, 5ml, 10ml, 15ml(conical), 20ml, 25ml, 50ml



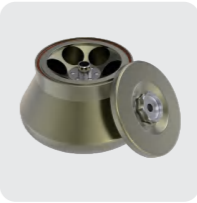
Rotor Type: Angle Rotor
Max. Capacity: 6x250ml
Max. Speed: 15000rpm
Max. RCF: 34519xg
Order No.: UltraSpin-06250A
Adapter: 1.5ml, 5ml, 10ml, 15ml(conical), 50ml(conical/round), 100ml



Rotor Type: Angle Rotor
Max. Capacity: 6x500ml
Max. Speed: 10000rpm
Max. RCF: 17700xg
Order No.: UltraSpin-06500A
Adapter: 1.5ml, 5ml, 10ml, 15ml(conical), 30ml, 50ml(conical/round), 100ml, 250ml



Rotor Type: Angle Rotor (Carbon Fiber)
Max. Capacity: 4x1000ml
Max. Speed: 10500rpm
Max. RCF: 20740xg
Order No.: UltraSpin-041000
Adapter: 50ml(conical/round), 250ml, 500ml



Rotor Type: Angle Rotor
Max. Capacity: 6x100ml
Max. Speed: 23500rpm
Max. RCF: 67050xg
Order No.: UltraSpin-06100
Adapter: 5ml, 10ml, 15ml(conical/round), 25ml, 50ml(conical/round)



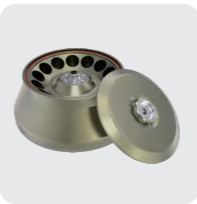
Rotor Type: Angle Rotor
Max. Capacity: 10x100ml
Max. Speed: 18000rpm
Max. RCF: 47898xg
Order No.: UltraSpin-10100
Adapter: 5ml, 10ml, 15ml(conical/round), 25ml, 50ml(conical/round)



Rotor Type: Swing Rotor
Max. Capacity: 6x50ml (Windshield)
Max. Speed: 13000rpm
Max. RCF: 27680xg
Order No.: UltraSpin-0650W



Rotor Type: Angle Rotor (2 loop holes)
Max. Capacity: 24x15ml
Max. Speed: 20000rpm
Max. RCF: 54558xg
Order No.: UltraSpin-2415L
Adapter: 5ml



Rotor Type: Angle Rotor
Max. Capacity: 14x50ml
Max. Speed: 17000rpm
Max. RCF: 39800xg
Order No.: UltraSpin-1450A
Adapter: 1.5ml, 5ml, 10ml, 20ml, 25ml, 30ml



Rotor Type: Angle Rotor (Carbon Fiber)
Max. Capacity: 14x50ml
Max. Speed: 14000rpm
Max. RCF: 33565xg
Order No.: UltraSpin-1450C
Adapter: 1.5ml, 5ml, 10ml, 15ml(conical), 20ml, 25ml, 30ml



Rotor Type: Angle Rotor (Carbon Fiber)
Max. Capacity: 6x250ml
Max. Speed: 16000rpm
Max. RCF: 39275xg
Order No.: UltraSpin-06250C
Adapter: 1.5ml, 5ml, 10ml, 15ml(conical), 50ml(conical/round), 100ml



Rotor Type: Angle Rotor (Carbon Fiber)
Max. Capacity: 6x500ml
Max. Speed: 12000rpm
Max. RCF: 24471xg
Order No.: UltraSpin-06500C
Adapter: 1.5ml, 5ml, 10ml, 15ml(conical), 30ml, 50ml(conical/round), 100ml, 250ml

Rotor	Bucket	Adaptor	Capacity	Adaptor	Capacity
 Rotor Type: Swing Rotor (Windshield) Max. Capacity: 4x250ml Max. Speed: 7500rpm Max. RCF: 10376xg Order No.: UltraSpin-04250S	 Round Bucket		4x1x100ml		4x1x50ml (Conical/Round)
			4x2x20ml		4x4x15ml (Conical)
			4x6x15ml		4x7x10ml
			4x10x5ml		4x8x1.5ml